

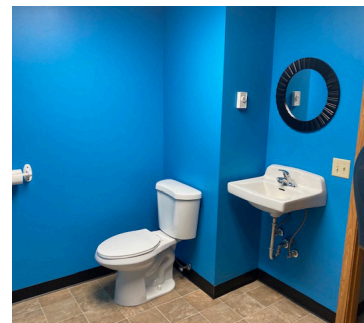
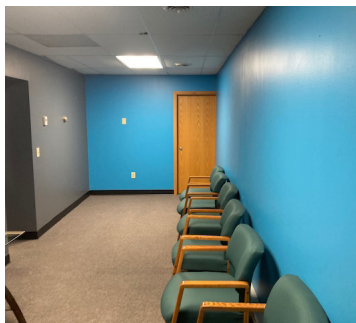
FOR LEASE

RETAIL/OFFICE SPACE | \$750-\$900

JEWELER

CINEMA
PROFESSIONAL
BUILDING

657 Main Street, Unit 5, Elk River, MN 55330



Property Features:

- 958 sqft
- 2 offices
- Work area, 3rd office, conference/
break room
- Private bath and waiting room
- Street entrance



Visit our Website to Apply!

www.bpm-mn.com

(763) 295-6566

35 Lake Street S #500 | Big Lake, MN 55309

Listings@Bullseye411.com