

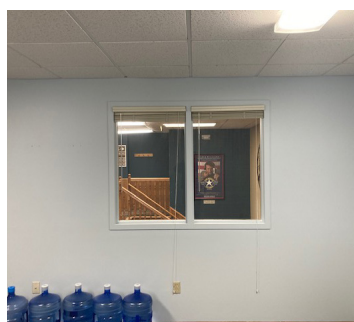
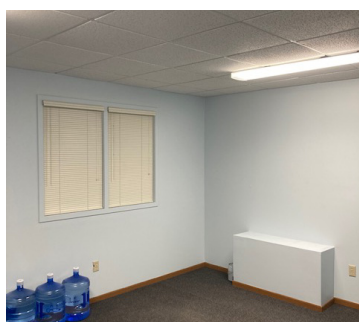
FOR LEASE

RETAIL/OFFICE SPACE | \$325

JEWELER

**CINEMA
PROFESSIONAL
BUILDING**

657 Main Street, Unit 201, Elk River, MN 55330



Property Features:

- 195 sqft
- 13x15
- Window to hallway
- Use of conference room



Visit our Website to Apply!

www.bpm-mn.com

(763) 295-6566

35 Lake Street S #500 | Big Lake, MN 55309

Listings@Bullseye411.com