

FOR SALE

MULTI-FAMILY RESIDENTIAL

Offered at:
\$135,000

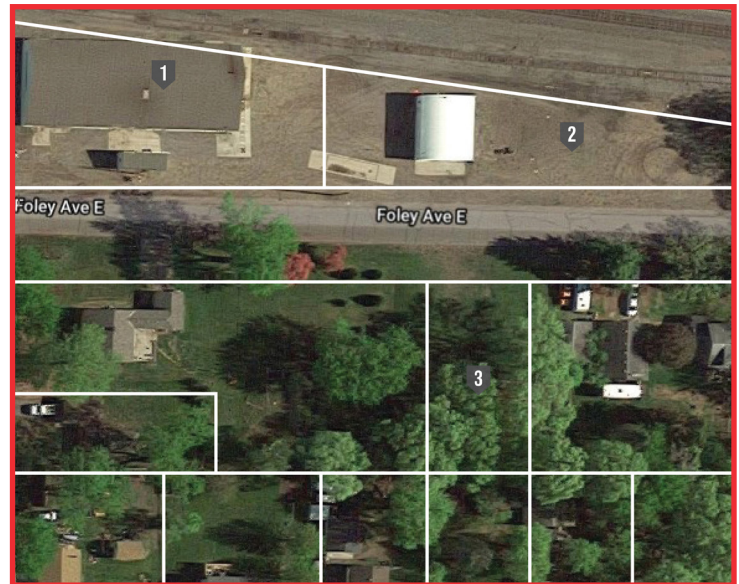


421 Foley Ave E, Big Lake, MN 55309

Property Features:

- 1.08 acres
- All buildings must be removed
- Corner lot 2 blocks south of HWY 10
- Zoned R3 - Residential High Density
- Plenty of off street parking
- Great set-up for condo/apartment style buildings
- Build up to 48 apartment units
- City is in need of apartment complexes to fit their growth plans

*Seller will convey title to the Property to Buyer by a special or limited warranty deed, subject to a restriction for a period of twenty (20) years following the conveyance, the Property may not be used for the sale or distribution of agricultural chemicals, seed or fertilizer.



Bullseye 
Properties
Leasing • Realty

(763) 275-1515

35 Lake Street S #300 | Big Lake, MN 55309

Listings@Bullseye411.com